

Todd H. Baron, MD, G. S. Raju, MD, *Editors for VideoGIE*

Immune-mediated cholangiopathy

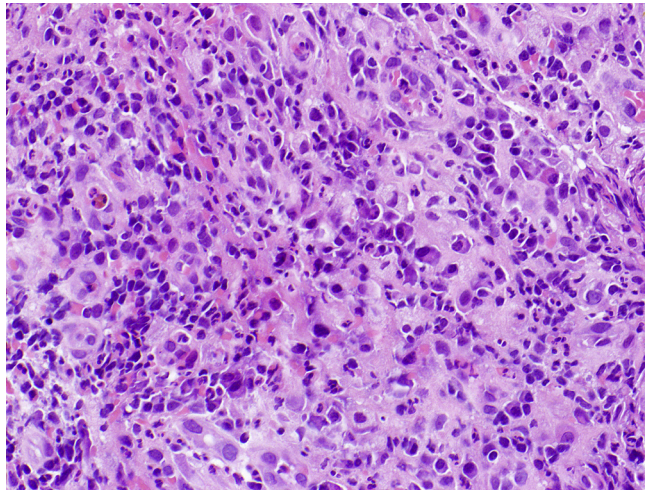


Figure 1. IgG4 hilar stricture.

This video ([Fig. 1](#); [Video 1](#), available online at www.giejournal.org) describes the diagnostic challenges associated with a hilar stricture and the importance of various endoscopic modalities in securing a diagnosis. In this video, we highlight the use of cholangioscopy in aiding the diagnosis of IgG4 disease and tailoring its management. We additionally comment on the value of interval cholangiography to assess for clinical and radiologic improvement.

DISCLOSURE

The following author disclosed a financial relationship relevant to this publication: R. Sturgess is an advisor to

Boston Scientific. All other authors disclosed no financial relationships relevant to this publication.

Shyam Menon, MD, MRCP, MRCP(Gastro), PGDip(Epid), PGDip(Nutr Med), Venkata Lekharaju, MD, MRCP, Department of Gastroenterology, Monica Terlizzo, MD, Department of Histopathology, Richard Sturgess, MD, FRCP, Department of Gastroenterology, University Hospital Aintree, Liverpool, UK

<http://dx.doi.org/10.1016/j.gie.2013.12.032>